

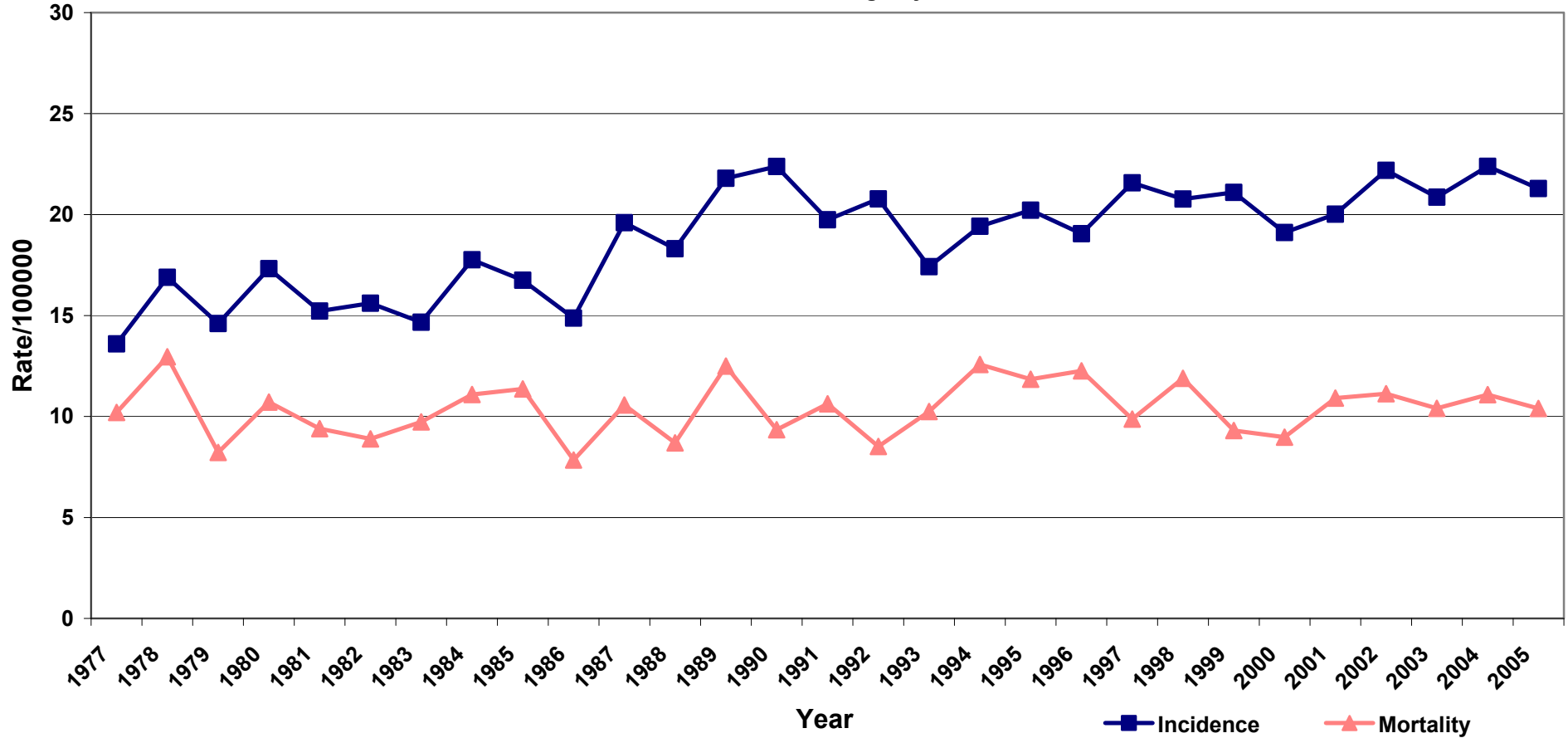
Leukaemia

While male and female leukaemia incidence rates have increased over time, the rate of increase has been lower in the 1995-2005 period than in the 1977-1994 period. Male and female mortality rates have been stable over time.

Male Leukemia - Incidence and Mortality*

1977-2005 All Ages

All Leukemias - Acute and Chronic
Source - SA Cancer Registry



*Age Standardised to Aust 2001 Pop.

Three Year Moving Average

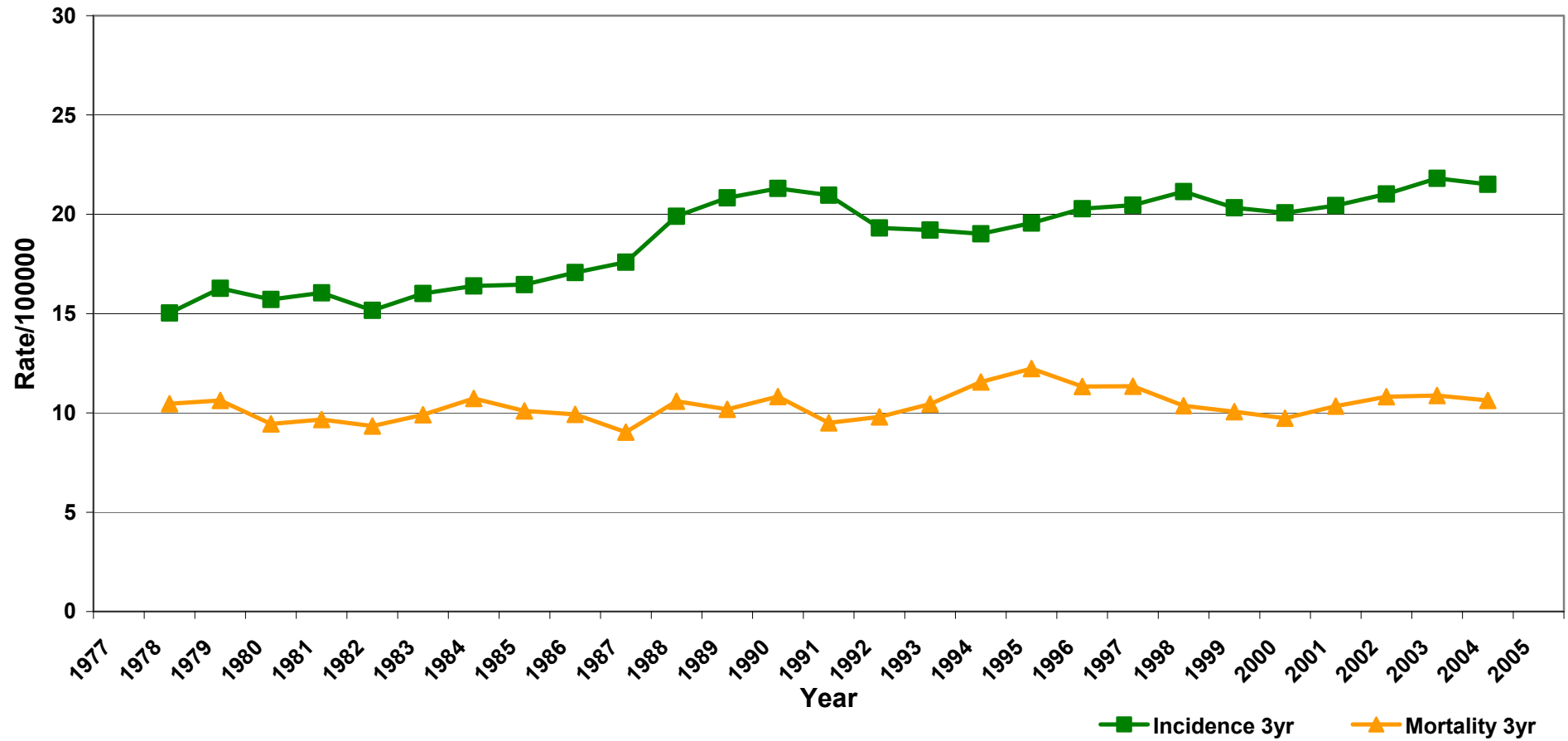
Male Leukemia - Incidence and Mortality*

1977-2005 All Ages

All Leukemias - Acute and Chronic

Three Year Moving Average

Source - SA Cancer Registry



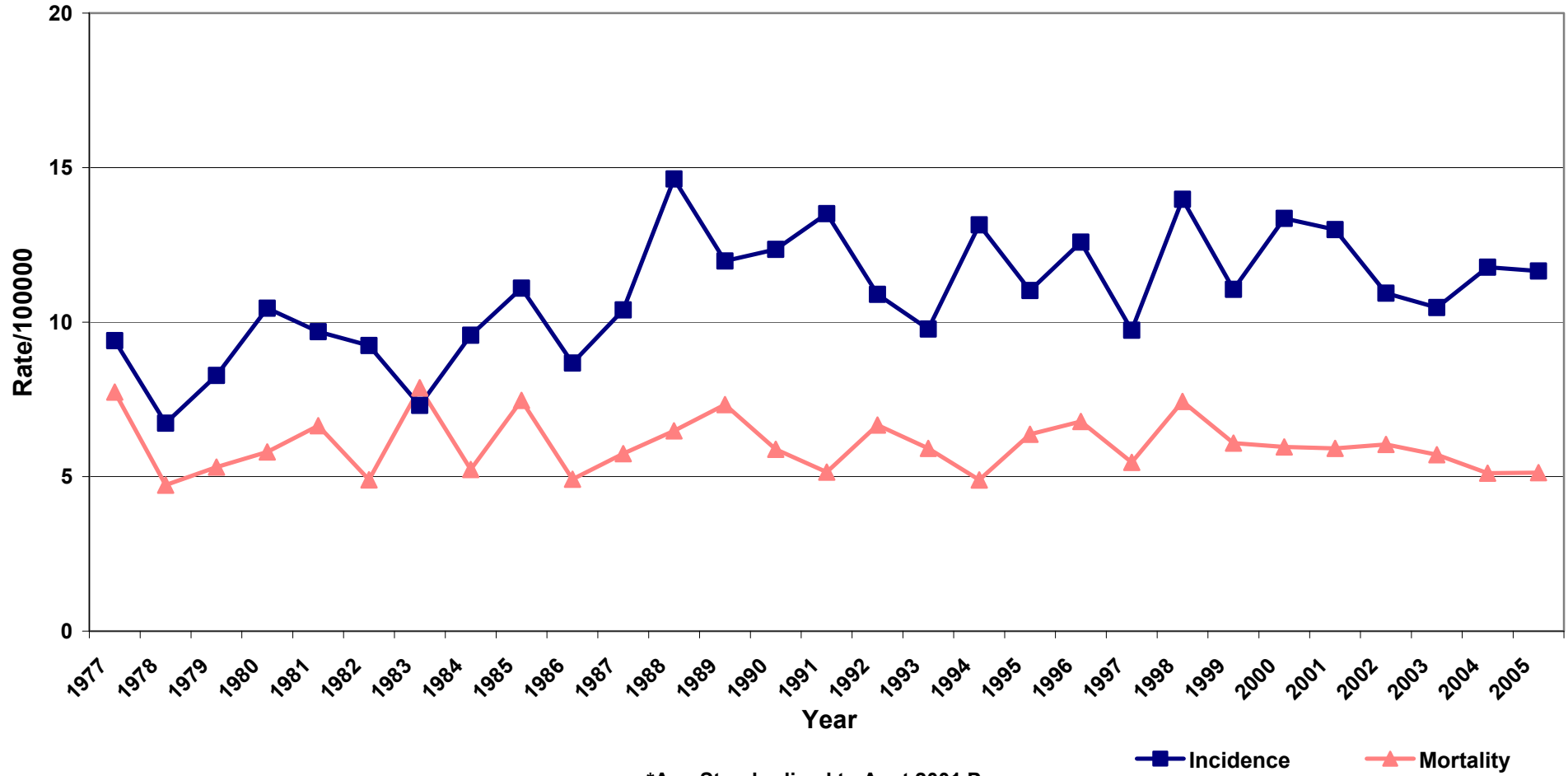
*Age Standardised to Aust 2001 Pop.

Female Leukemia - Incidence and Mortality*

1977-2005 All Ages

All Leukemias - Acute and Chronic

Source - SA Cancer Registry



*Age Standardised to Aust 2001 Pop.

Three Year Moving Average

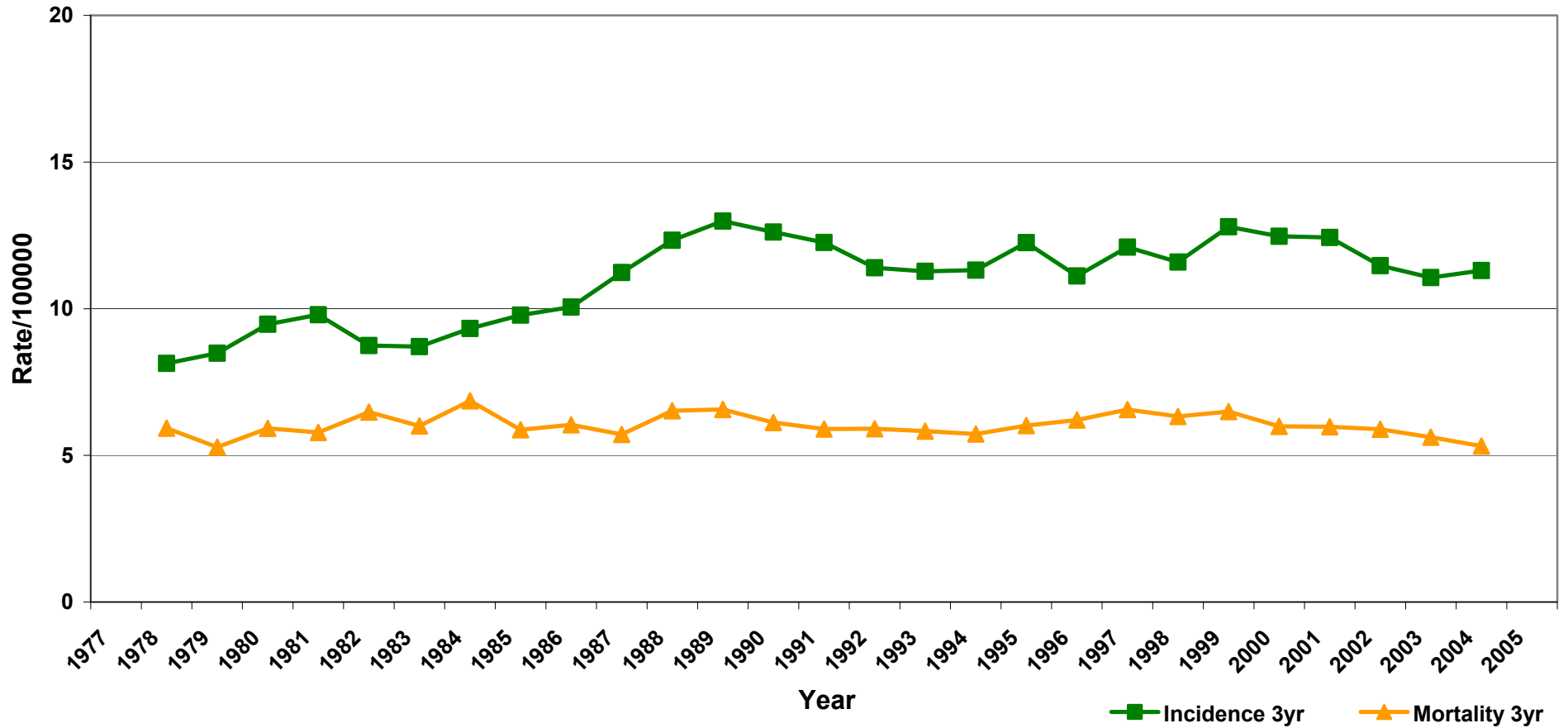
Female Leukemia - Incidence and Mortality*

1977-2005 All Ages

All Leukemias - Acute and Chronic

Three Year Moving Average

Source - SA Cancer Registry



*Age Standardised to Aust 2001 Pop.