

Lymphoma

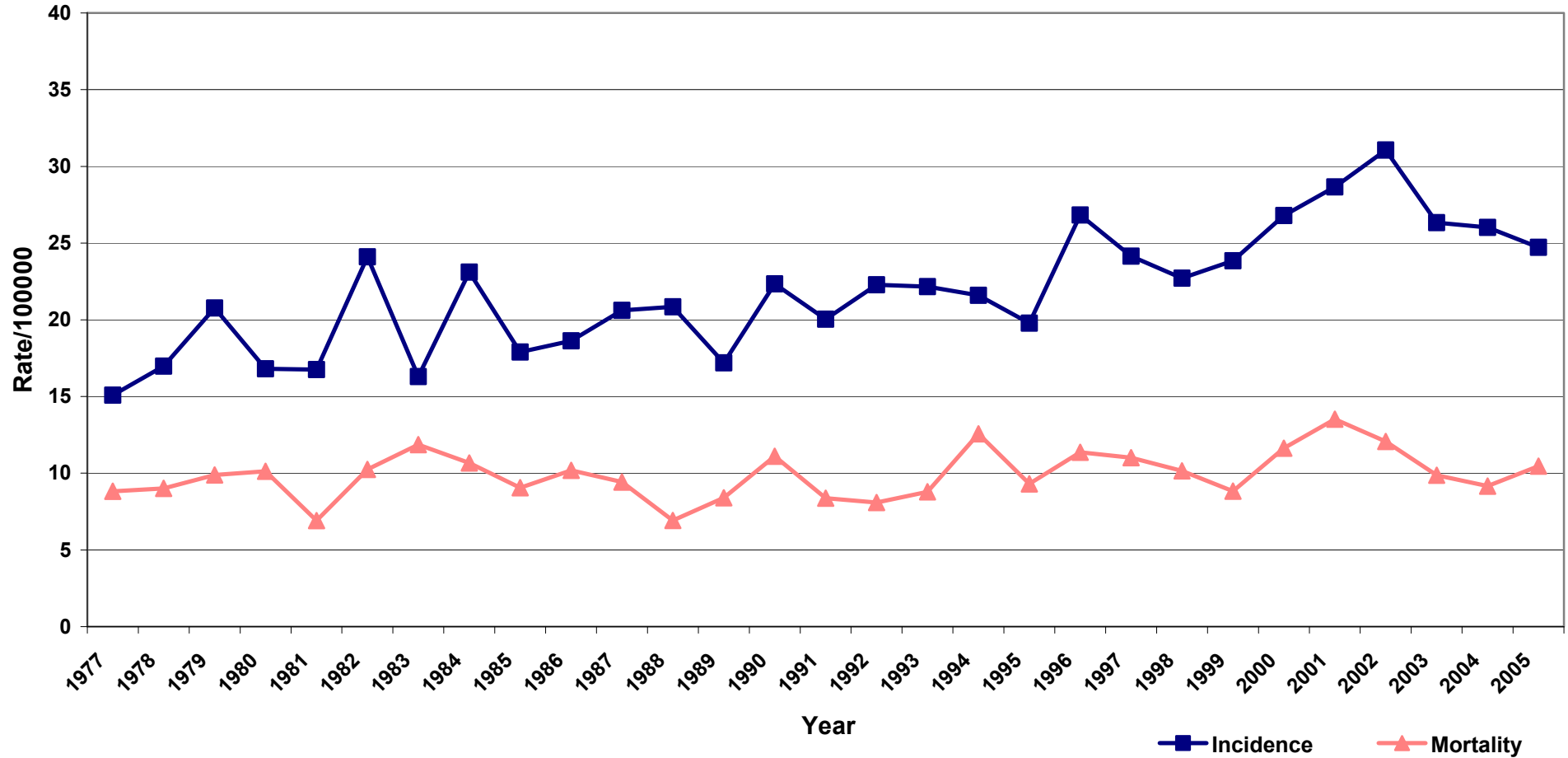
Male and female incidence and mortality rates for lymphomas have steadily increased over the period 1977-2005. However, in the last few years there are indications that rates may have reached a plateau.

Male Lymphoma - Incidence and Mortality*

1977-2005 All Ages

Includes Hodgkins and Non-Hodgkins Lymphomas

Source - SA Cancer Registry

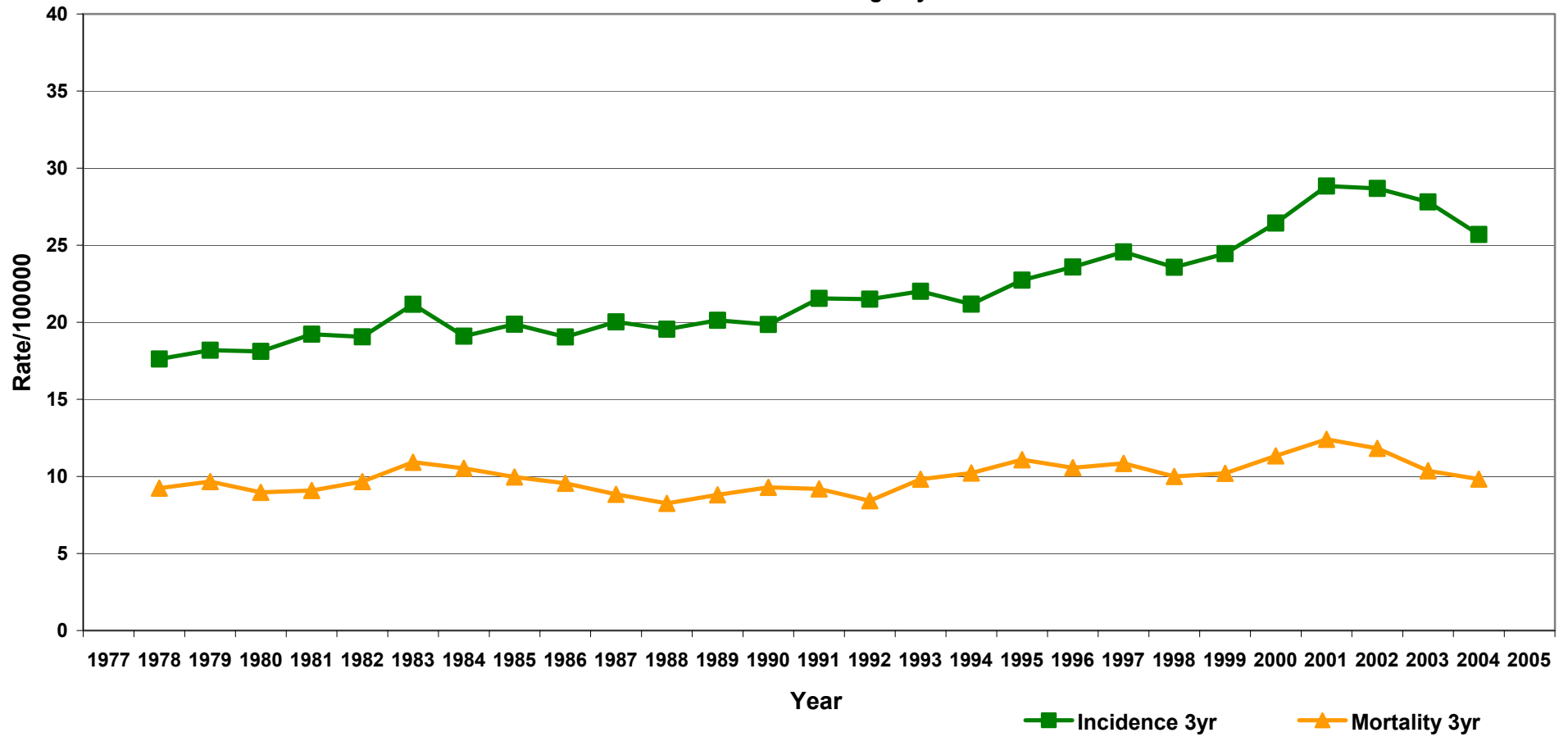


*Age Standardised to Aust 2001 Pop.

Three Year Moving Average

Male Lymphoma - Incidence and Mortality* 1977-2005 All Ages

Includes Hodgkins and Non-Hodgkins Lymphomas
Three Year Moving Average
Source - SA Cancer Registry



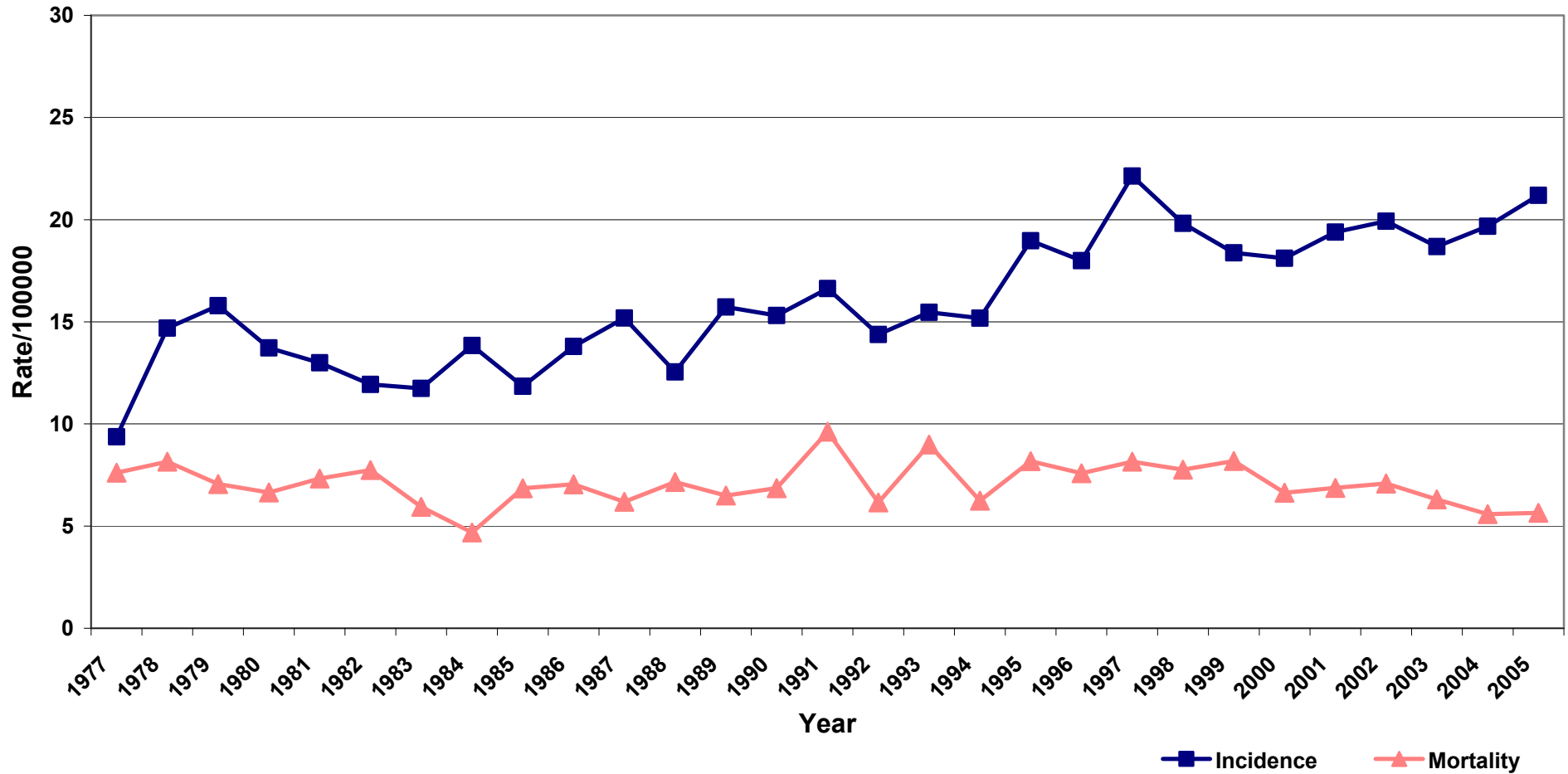
*Age Standardised to Aust 2001 Pop.

Female Lymphoma - Incidence and Mortality*

1977-2005 All Ages

Includes Hodgkins and Non-Hodgkins Lymphomas

Source - SA Cancer Registry

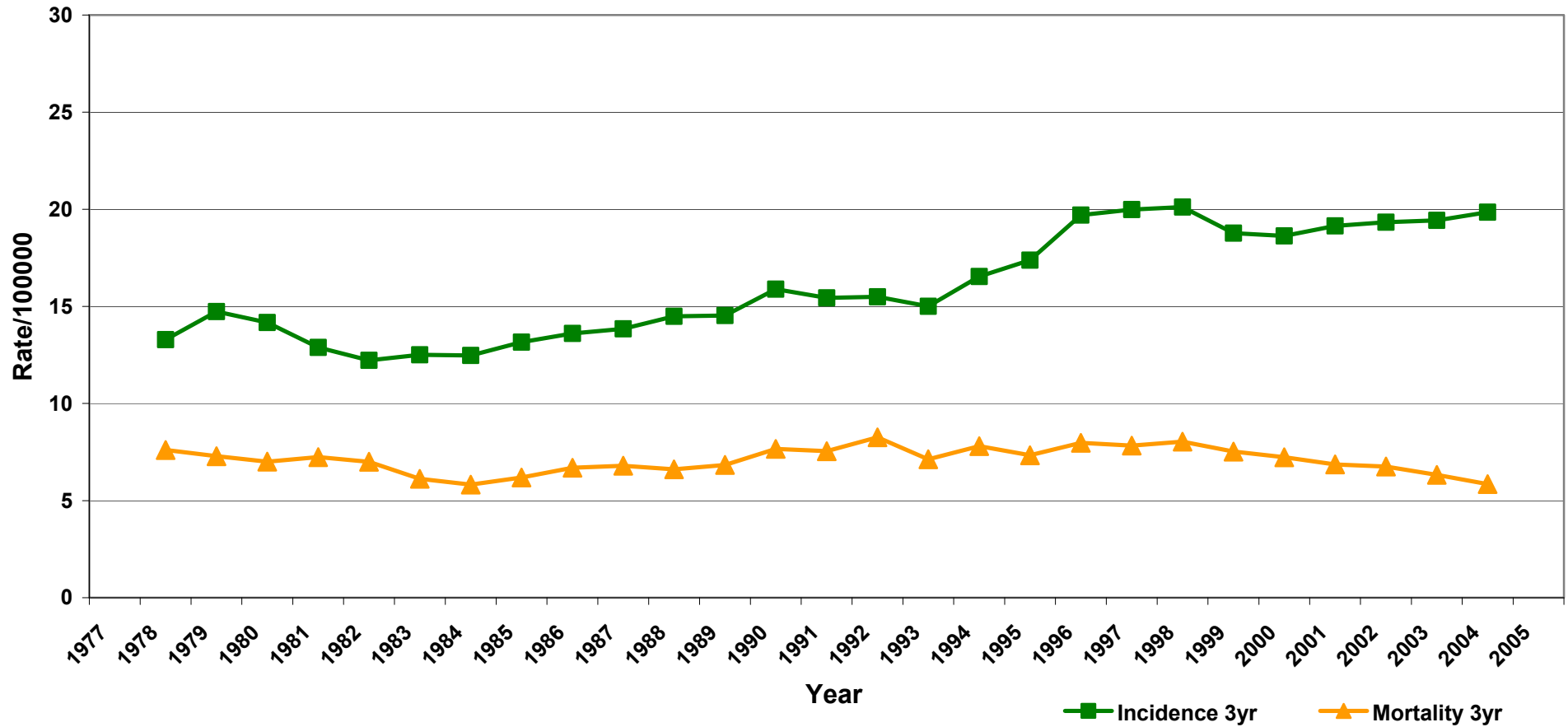


*Age Standardised to Aust 2001 Pop.

Three Year Moving Average

Female Lymphoma - Incidence and Mortality* 1977-2005 All Ages

Includes Hodgkins and Non-Hodgkins Lymphoma
Three Year Moving Average
Source - SA Cancer Registry



*Age Standardised to Aust 2001 Pop.