

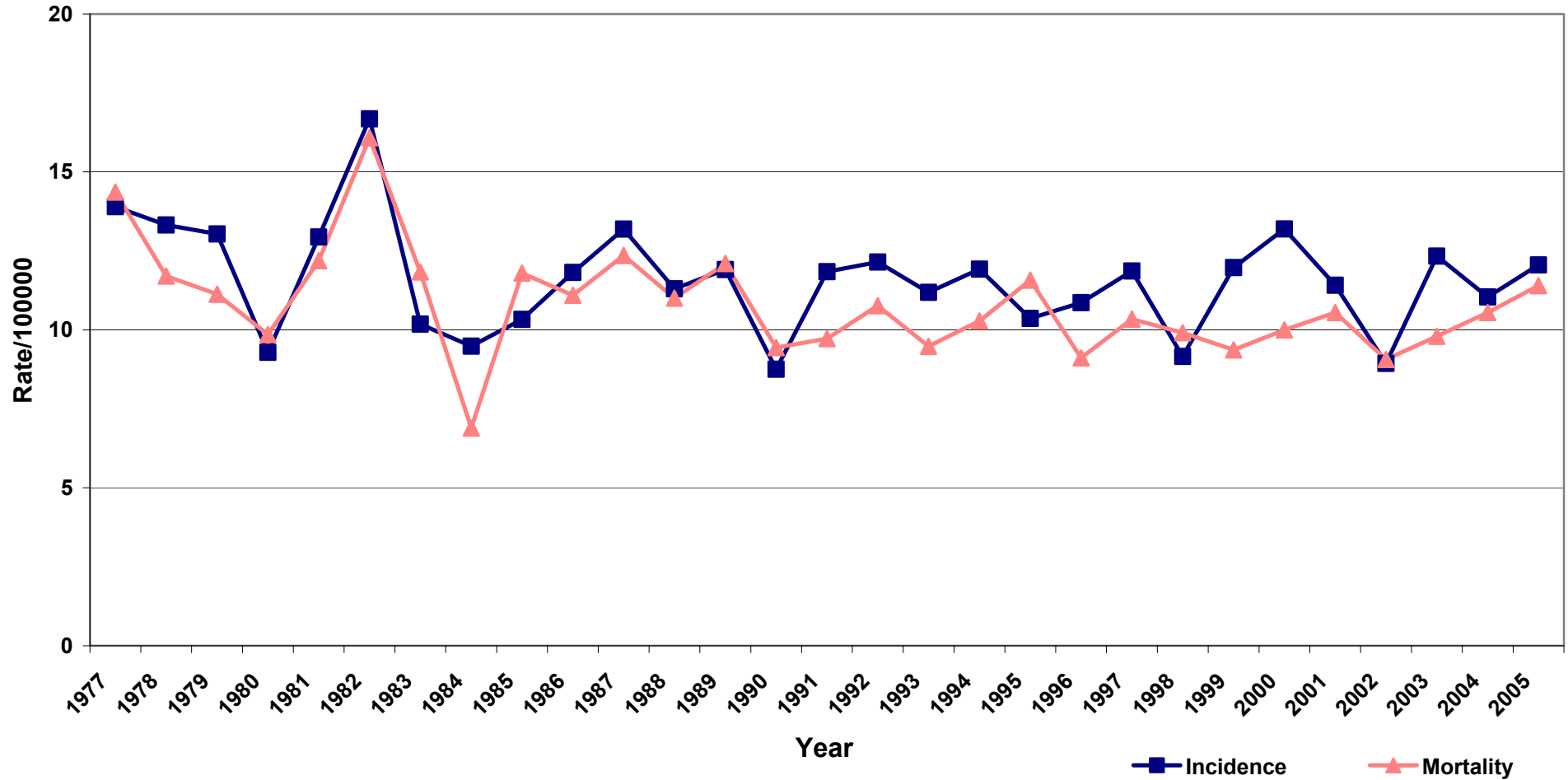
Pancreatic Cancer

Pancreatic cancer is one of the most fatal of all cancers. Male and female pancreatic cancer incidence and mortality rates have been steady over the period 1995-2005.

Male Pancreatic Cancer - Incidence and Mortality*

1977-2005 All Ages

Source - SA Cancer Registry Data

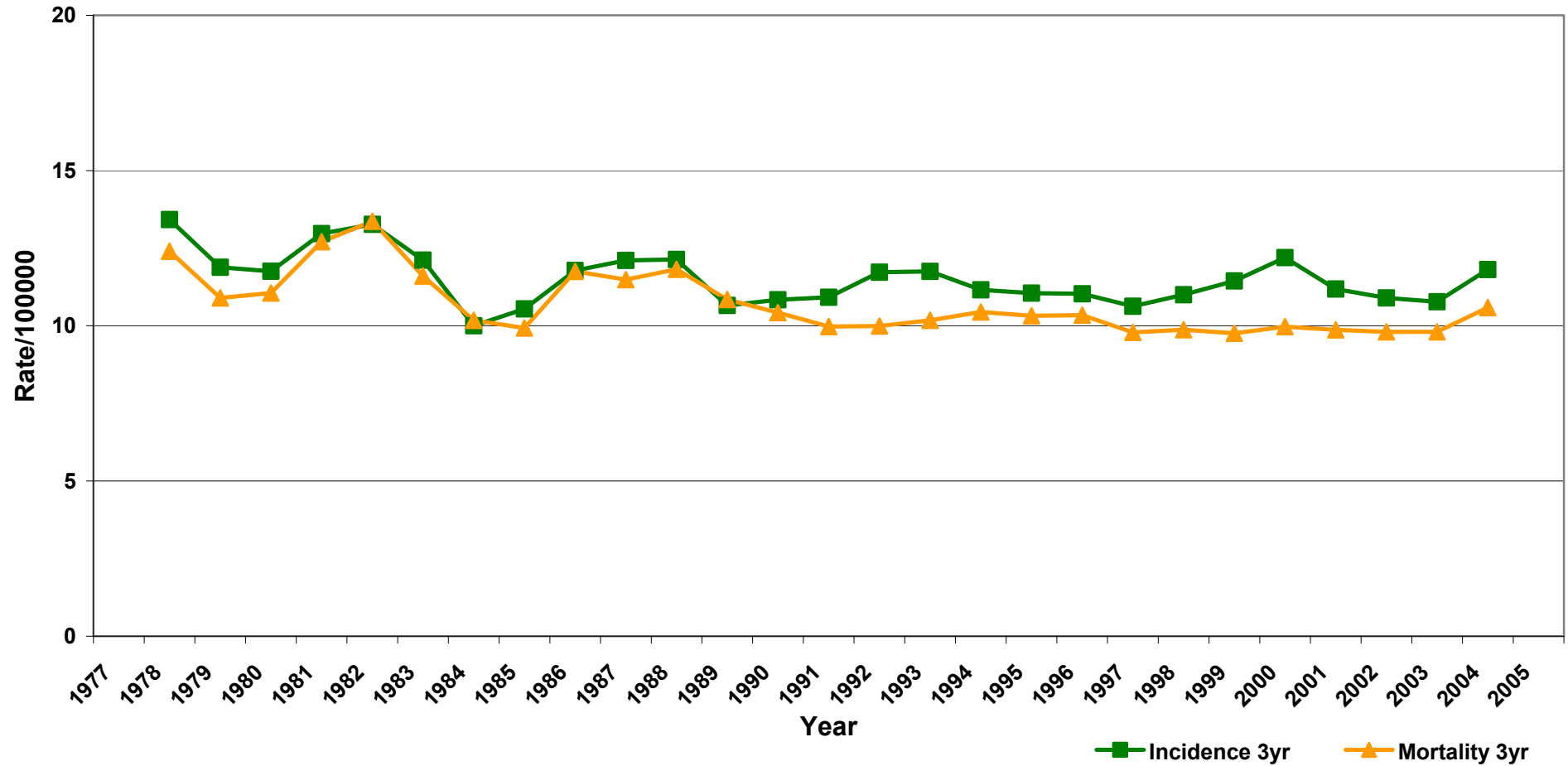


*Age Standardised to Aust 2001 Pop.

Three Year Moving Average

Male Pancreatic Cancer - Incidence and Mortality* 1977-2005 All Ages

Three Year Moving Average
Source - SA Cancer Registry

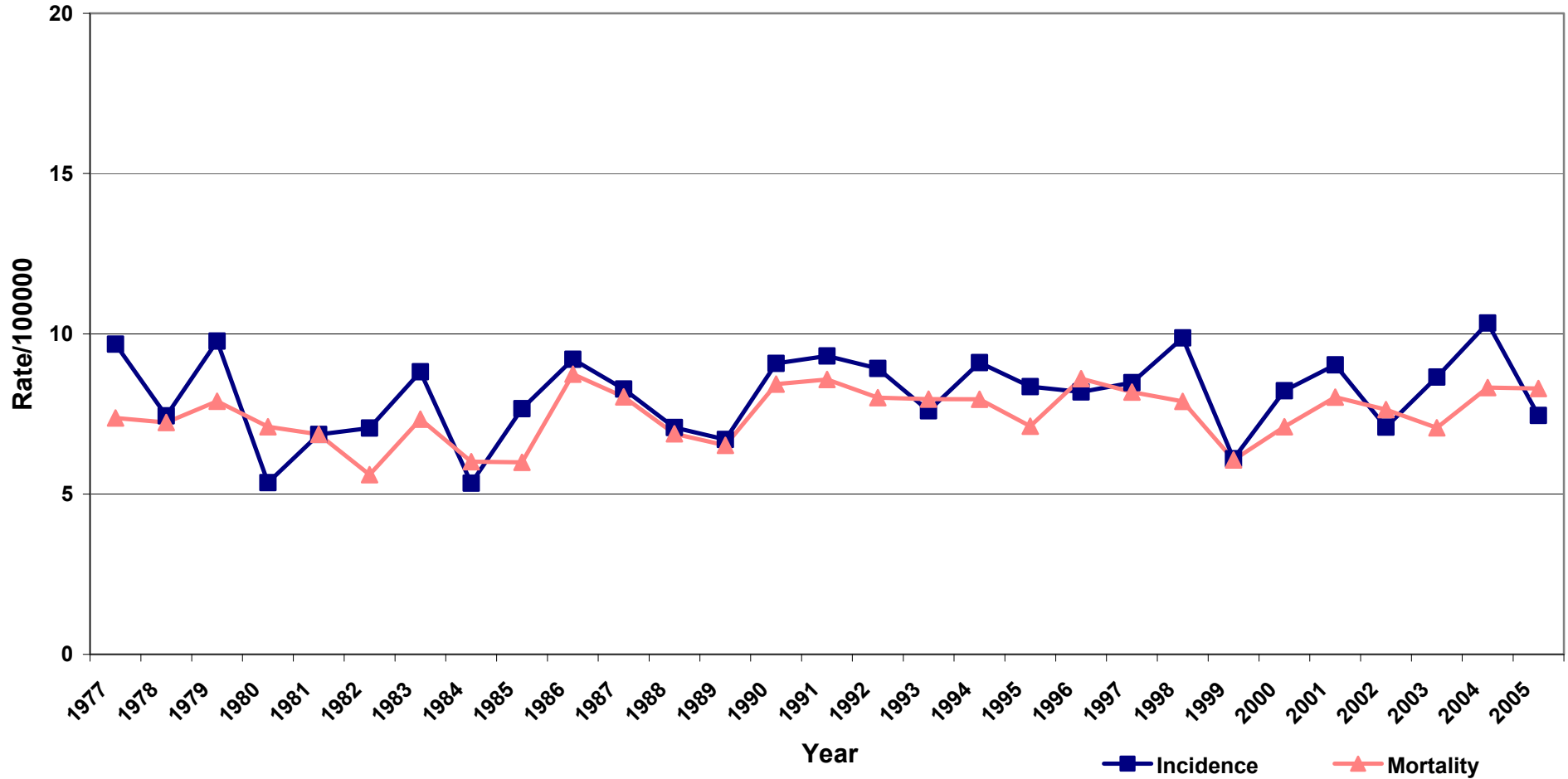


*Age Standardised to Aust 2001 Pop.

Female Pancreatic Cancer - Incidence and Mortality*

1977-2005 All Ages

Source - SA Cancer Registry

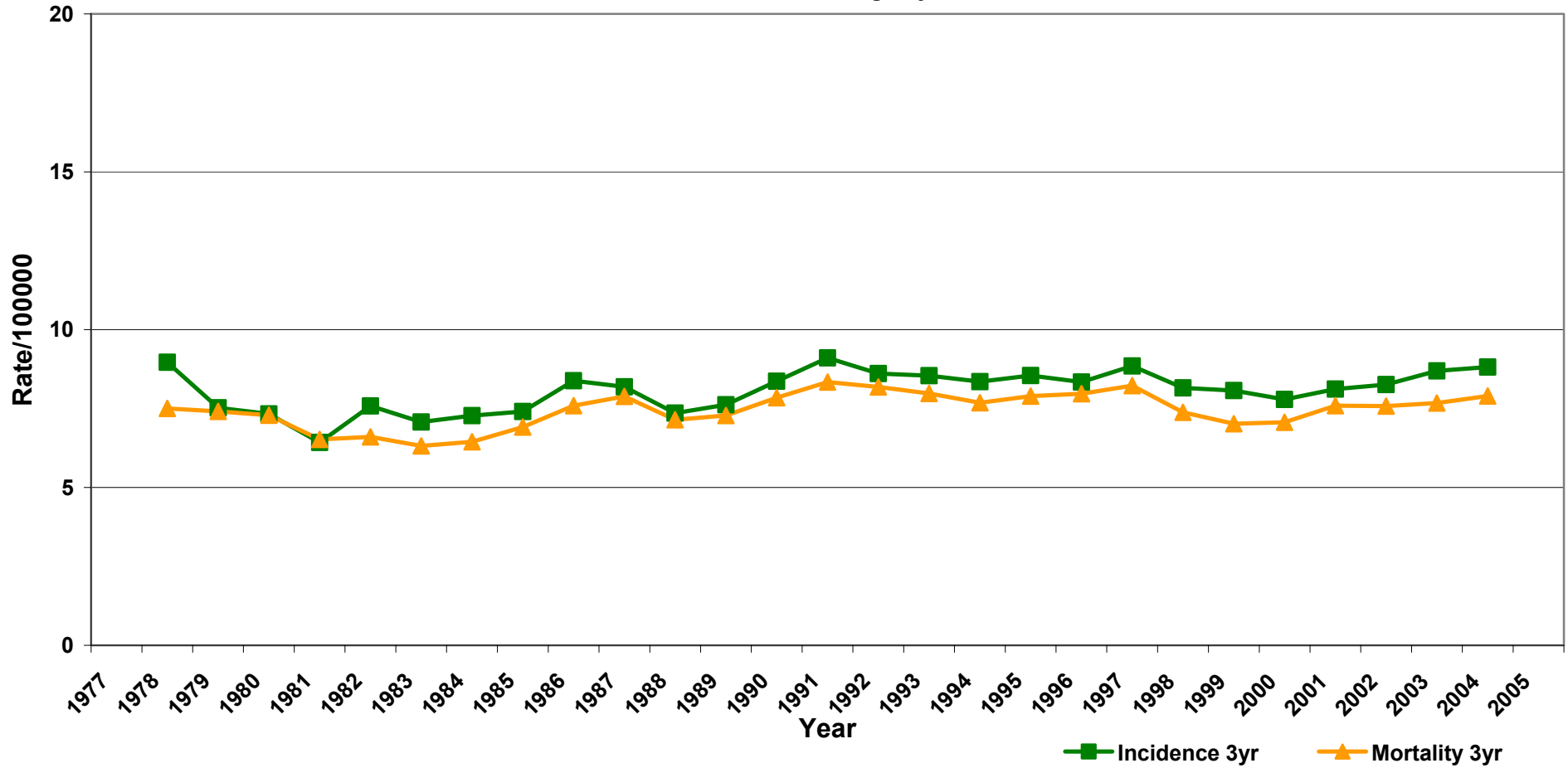


*Age Standardised to Aust 2001 Pop.

Three Year Moving Average

Female Pancreatic Cancer - Incidence and Mortality* 1977-2005 All Ages

Three Year Moving Average
Source - SA Cancer Registry



*Age Standardised to Aust 2001 Pop.