

## Skin Cancer (Melanoma)

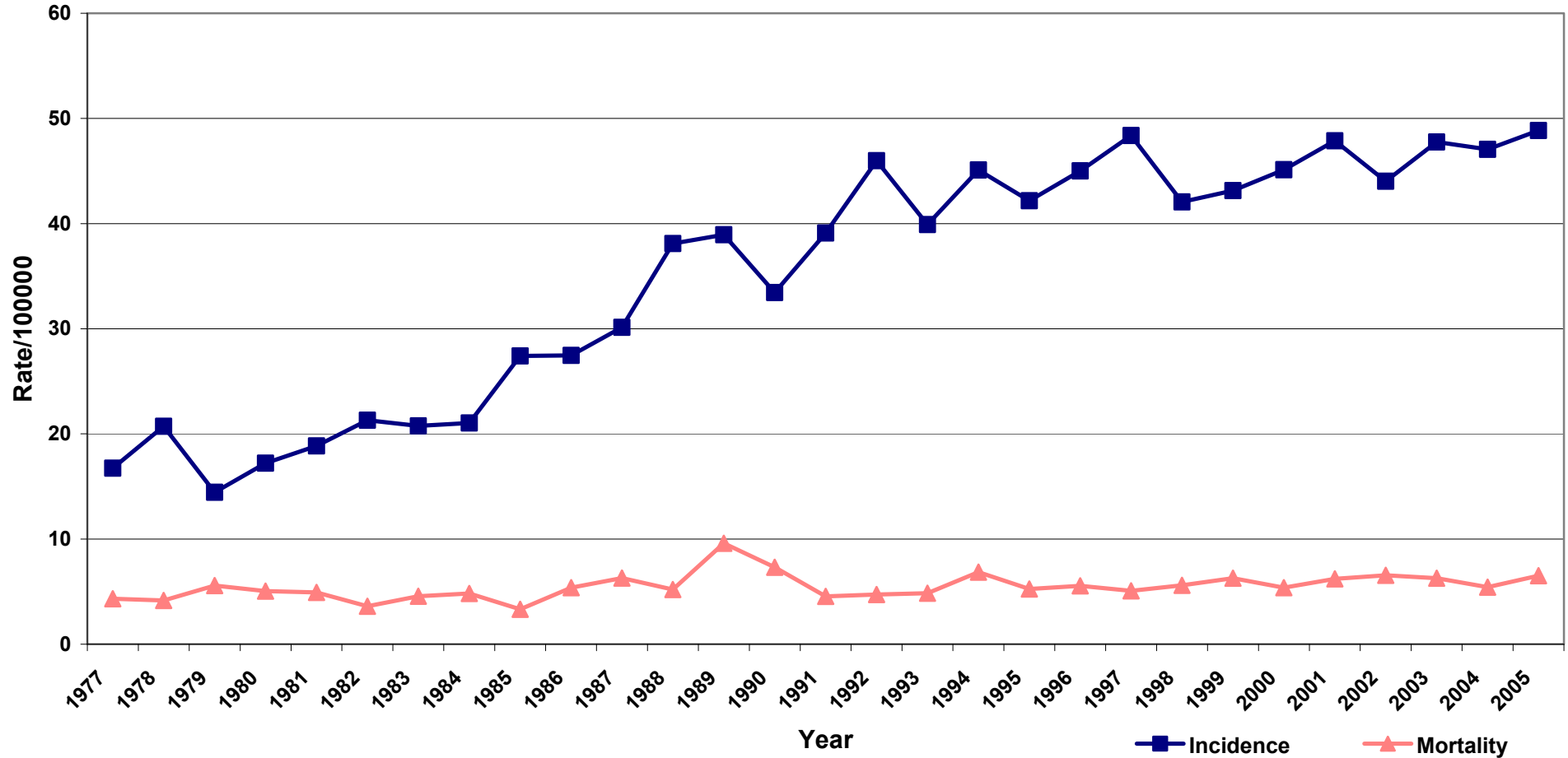
Melanoma incidence rates have increased by 10% in males and decreased by 10% in females in the period 1995-2005. Melanoma mortality rates have been steady in both sexes during that period.

Incidence and mortality rates are high in South Australia compared with the rest of the world, and melanoma is the fourth most commonly diagnosed cancer in both males and females.

# Male Melanoma (Skin) - Incidence and Mortality\*

1977-2005 All Ages

Source - SA Cancer Registry Data



\*Age Standardised to Aust 2001 Pop.

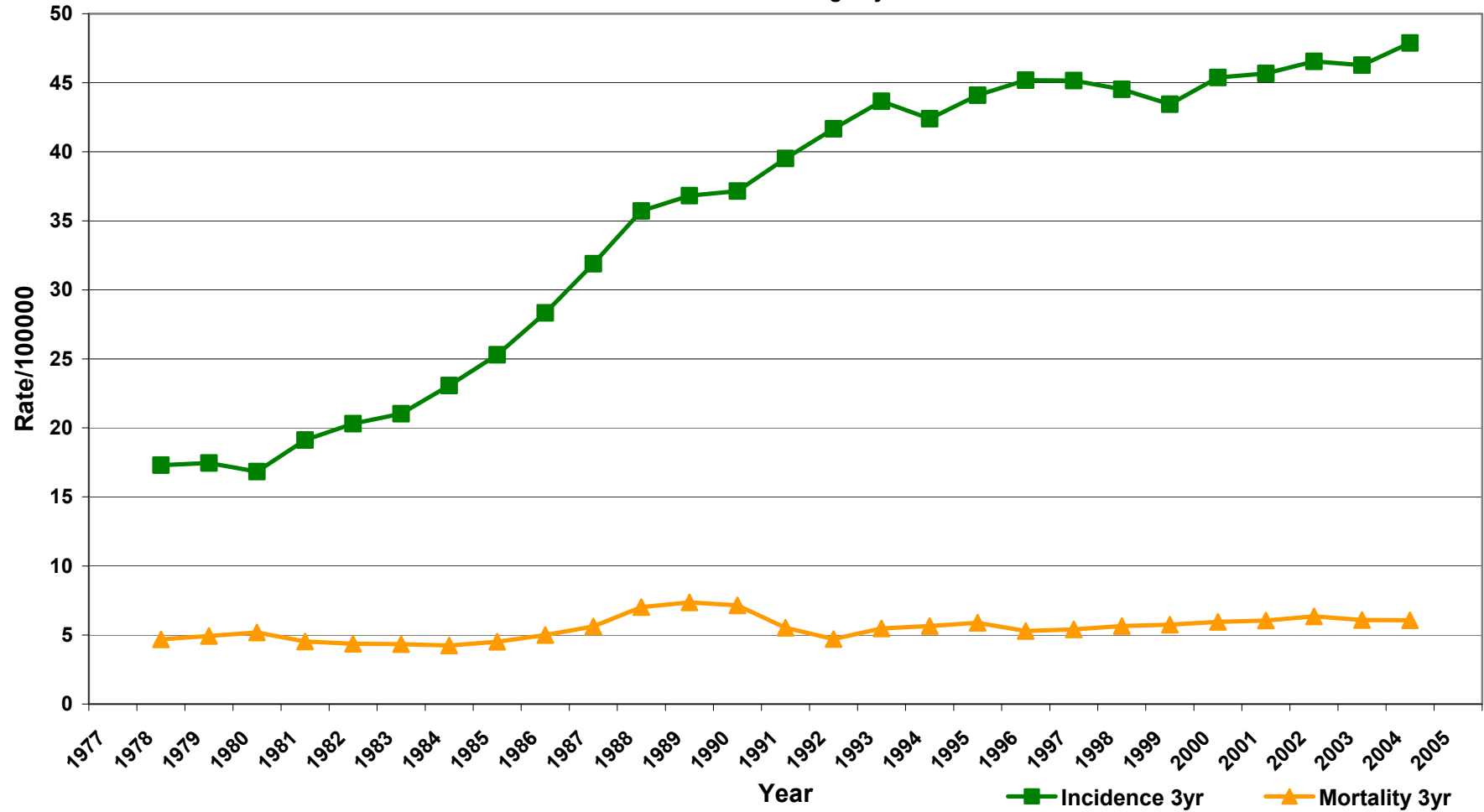
# Three Year Moving Average

## Male Melanoma (Skin) - Incidence and Mortality\*

1977-2005 All Ages

Three Year Moving Average

Source - SA Cancer Registry

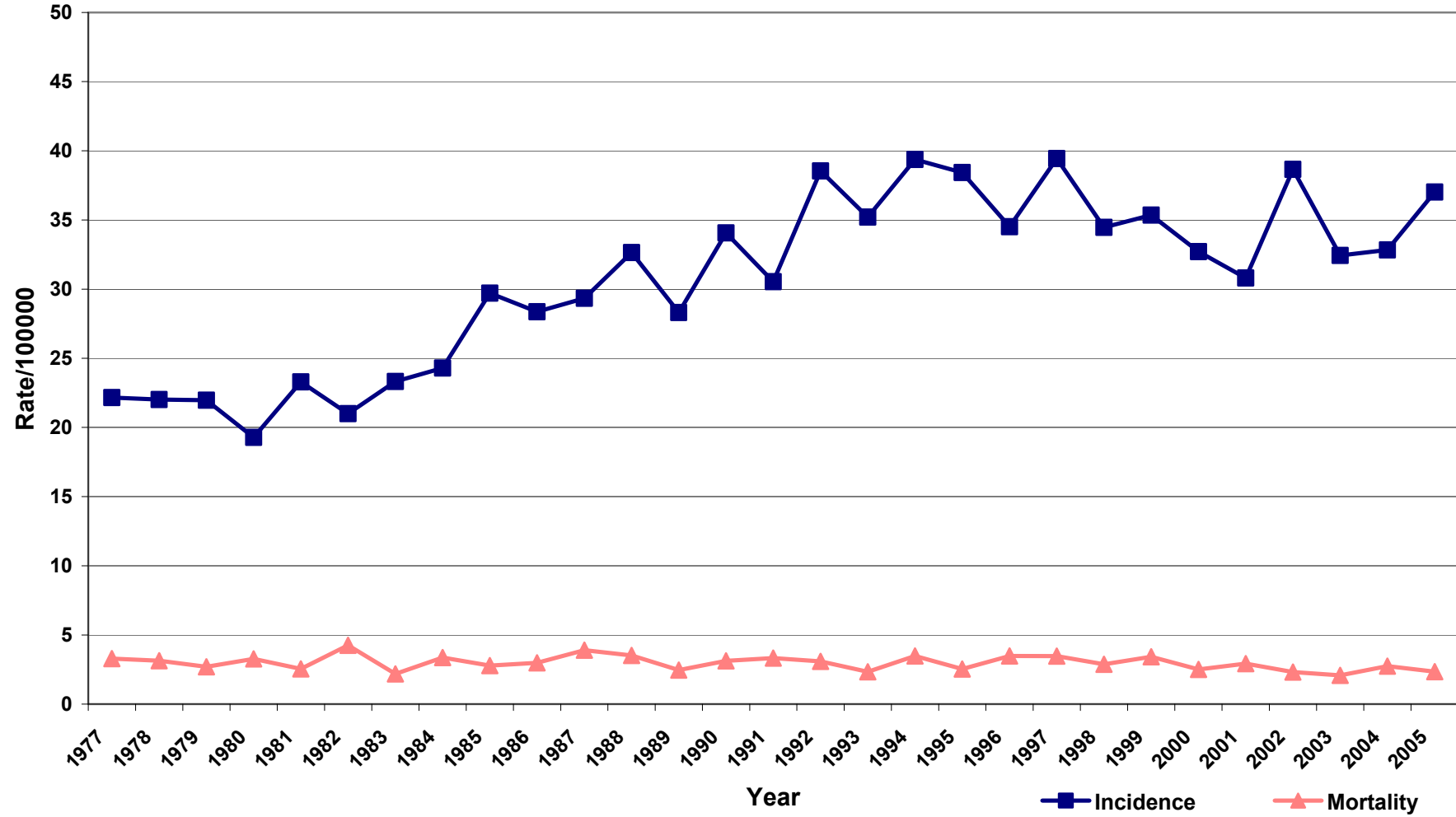


\*Age Standardised to Aust 2001 Pop.

# Female Melanoma (Skin) - Incidence and Mortality\*

1977-2005 All Ages

Source - SA Cancer Registry



\*Age Standardised to Aust 2001 Pop.

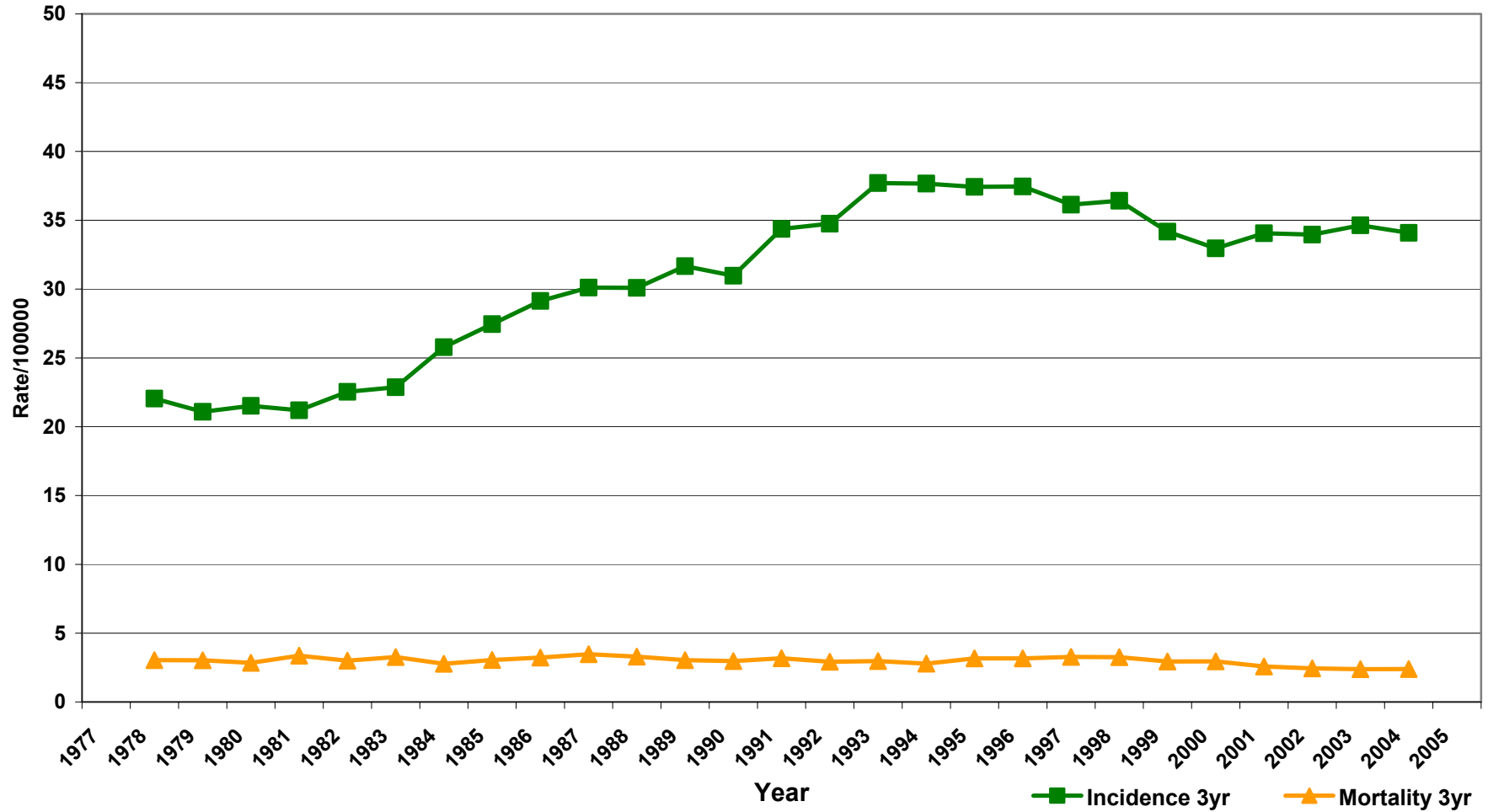
# Three Year Moving Average

## Female Melanoma (Skin) - Incidence and Mortality\*

1977-2005 All Ages

Three Year Moving Average

Source - SA Cancer Registry



\*Age Standardised to Aust 2001 Pop.