

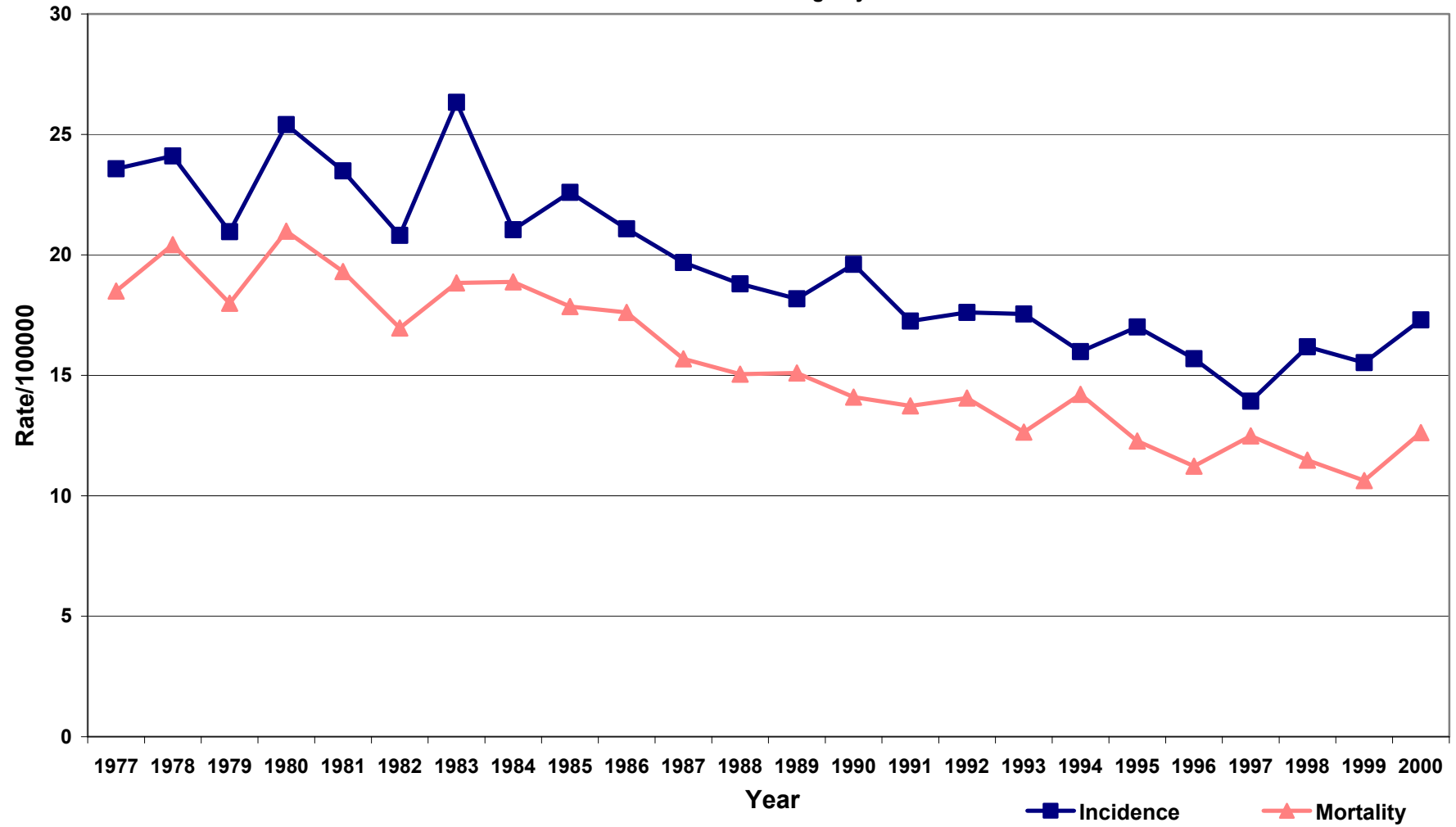
## Stomach Cancer

Male stomach cancer incidence and mortality has decreased by 15% over the period 1995-2005. Female incidence has remained steady over this time period but female mortality has decreased by 30%.

# Male Stomach Cancer - Incidence and Mortality\*

1977-2005 All Ages

Source - SA Cancer Registry



\*Age Standardised to Aust 2001 Pop.

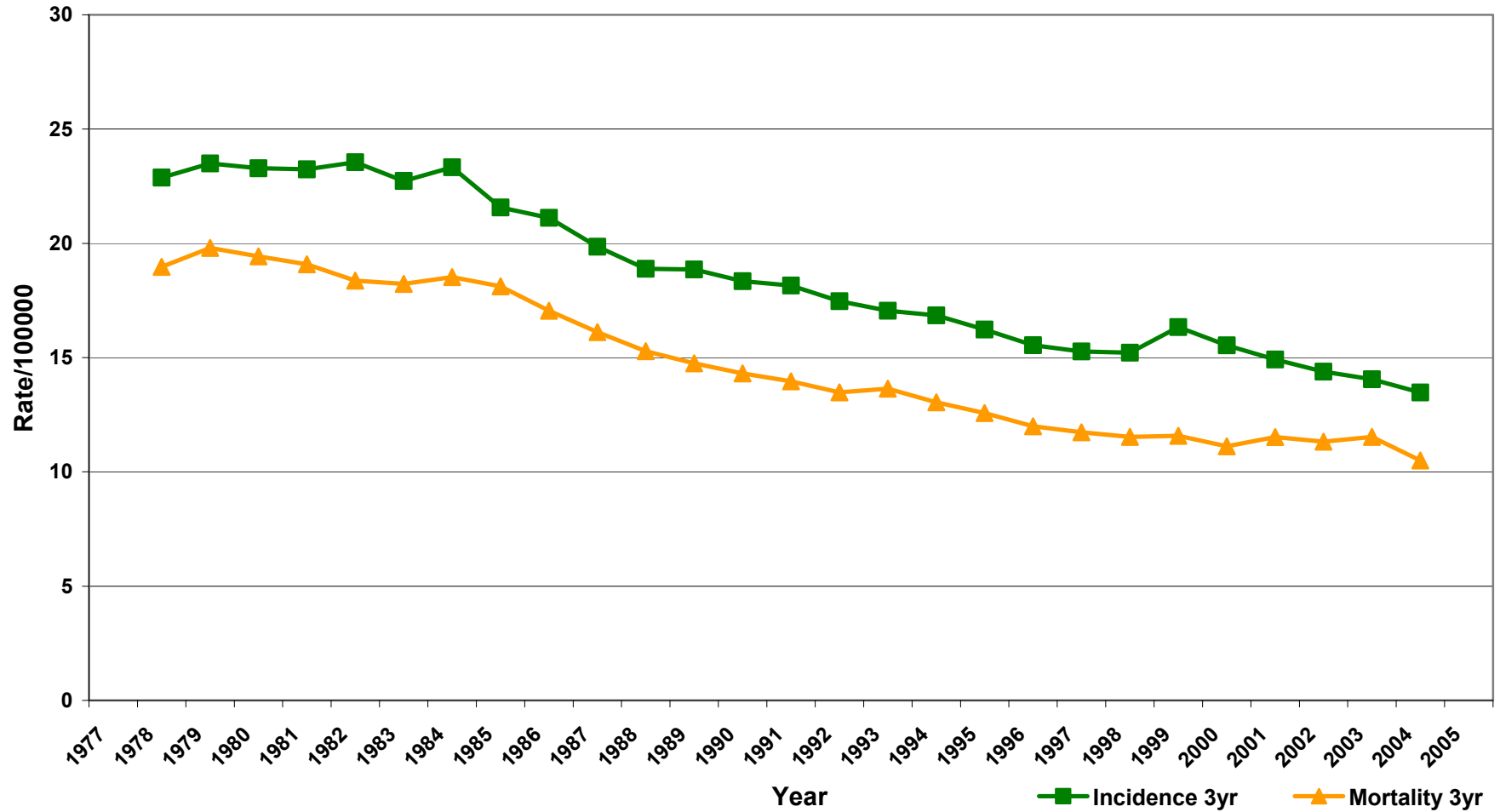
# Three Year Moving Average

## Male Stomach Cancer - Incidence and Mortality\*

1977-2005 All Ages

Three Year Moving Average

Source - SA Cancer Registry

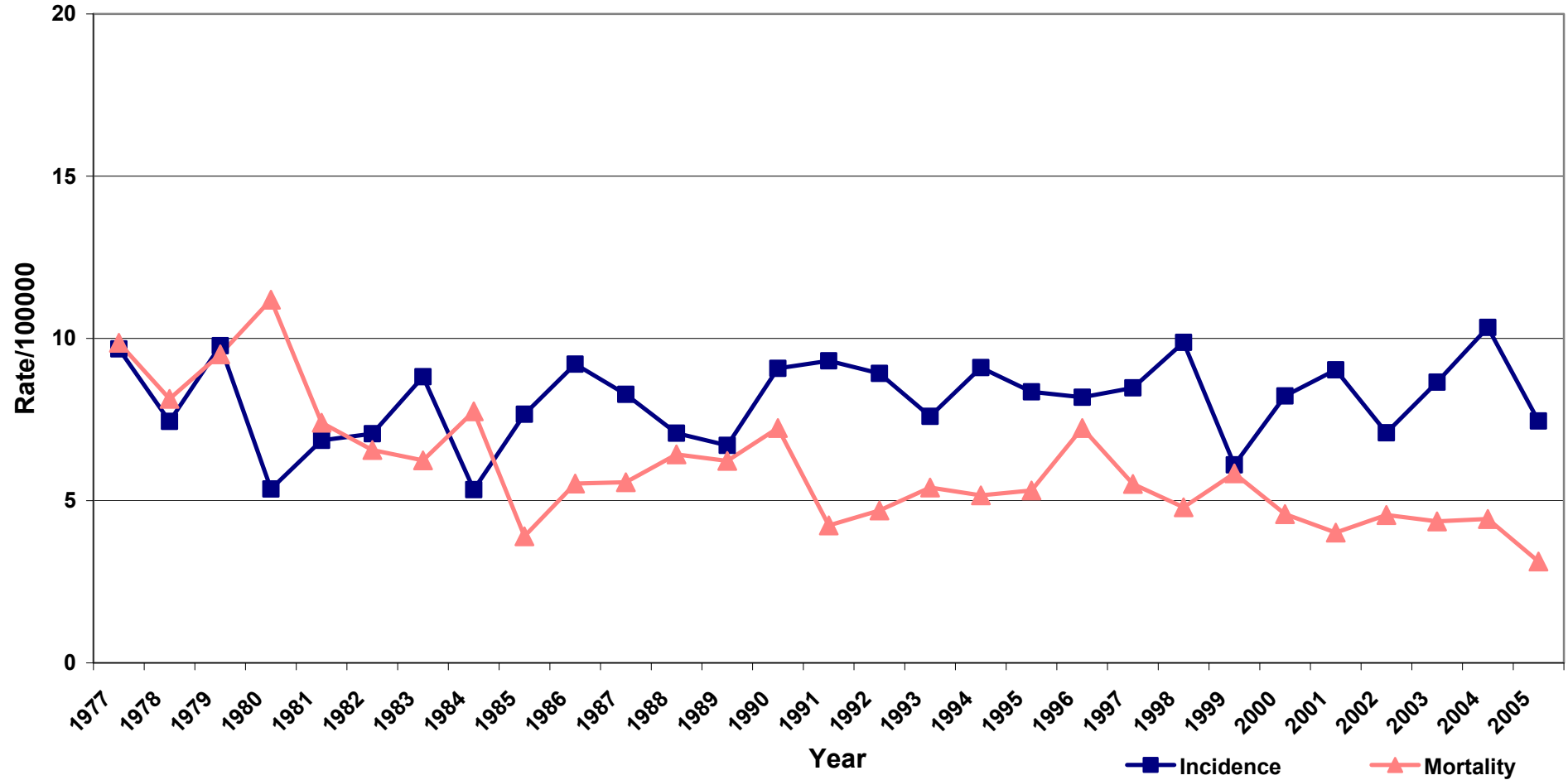


\*Age Standardised to Aust 2001 Pop.

# Female Stomach Cancer - Incidence and Mortality\*

1977-2005 All Ages

Source - SA Cancer Registry



\*Age Standardised to Aust 2001 Pop.

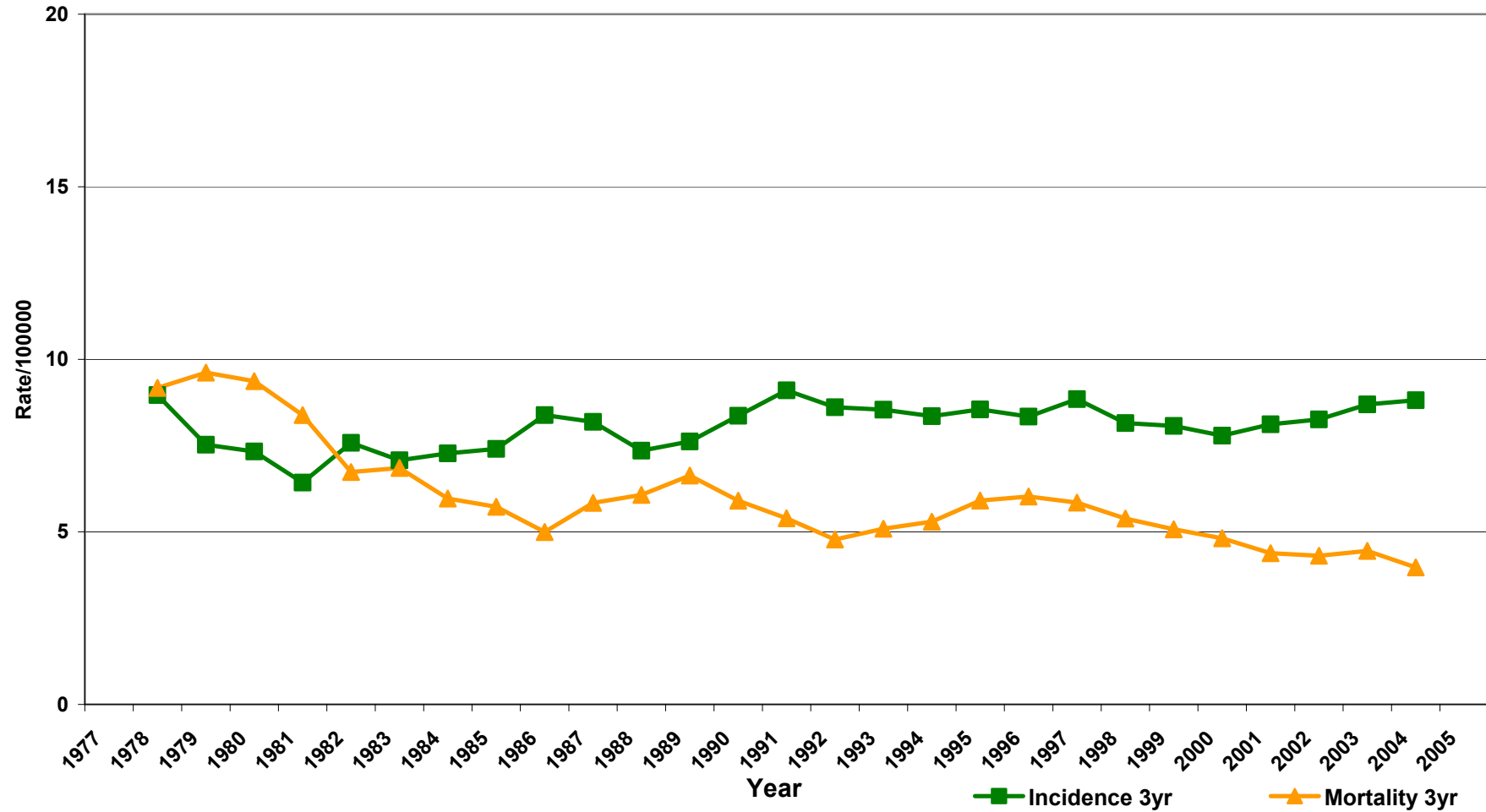
# Three Year Moving Average

## Female Stomach Cancer - Incidence and Mortality\*

1977-2005 All Ages

Three Year Moving Average

Source - SA Cancer Registry



\*Age Standardised to Aust 2001 Pop.