

Health for All through Planning

a

Health in All Policies response...

Wednesday 23 November 2011

Carmel Williams
Manager
Health in All Policies Unit
SA Health



Government
of South Australia

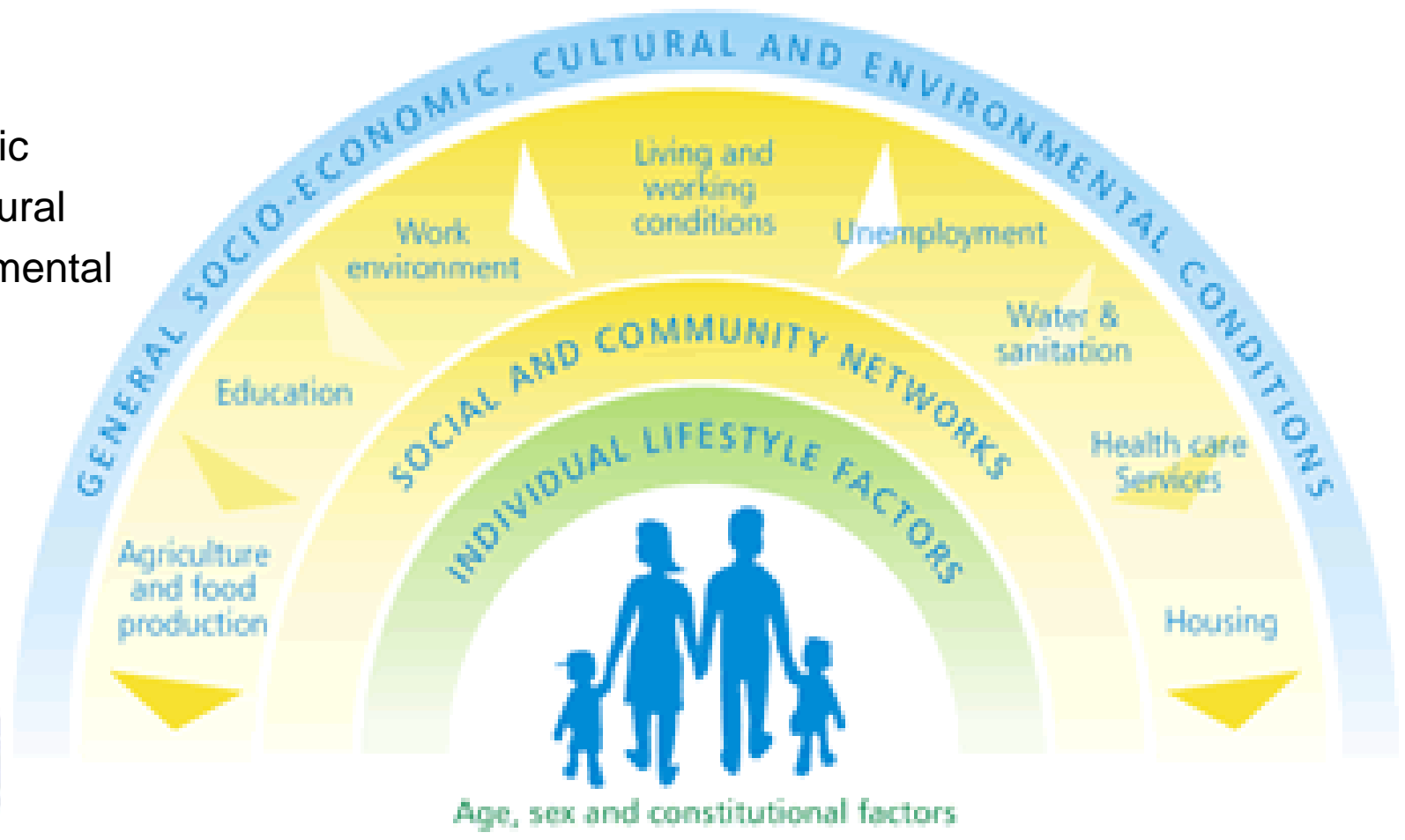
What is Health in All Policies

- Health in All Policies is about promoting healthy public policy. It is a way of working across government to encourage all sectors to consider the health impacts of their policies and practices.
- Health in All Policies is based on understanding that population health is largely influenced by social, economic, environmental, political and cultural determinants
- At the same time, Health in All Policies examines the contribution that a healthier population can make to other sectors' goals.
- Good population health has positive impacts on productivity, sustainability and the economy—it benefits all sectors and society as a whole.



Determinants of Health

- Social
- Economic
- Behavioural
- Environmental



Firstly: the problem

The agencies who are able to take action on the determinants of health don't (always) know how to and don't (always) see it as their business

In the Health sector we know we need to work intersectorally, but we are not always that good at it . . .



Health in All Policies takes a different approach

- We don't try to pull other agencies onto health's agenda or priorities
- We don't try to turn other sectors of government into health agencies
- We work with them on their issues and their priorities and help them achieve their policy goals in ways that protect and promote health.



The Foundations

- Thinker in Residence,
Professor Ilona Kickbusch
- South Australia's Strategic
Plan
- A receptive and proactive
Cabinet Office
- A willing and supportive Chief
Executive

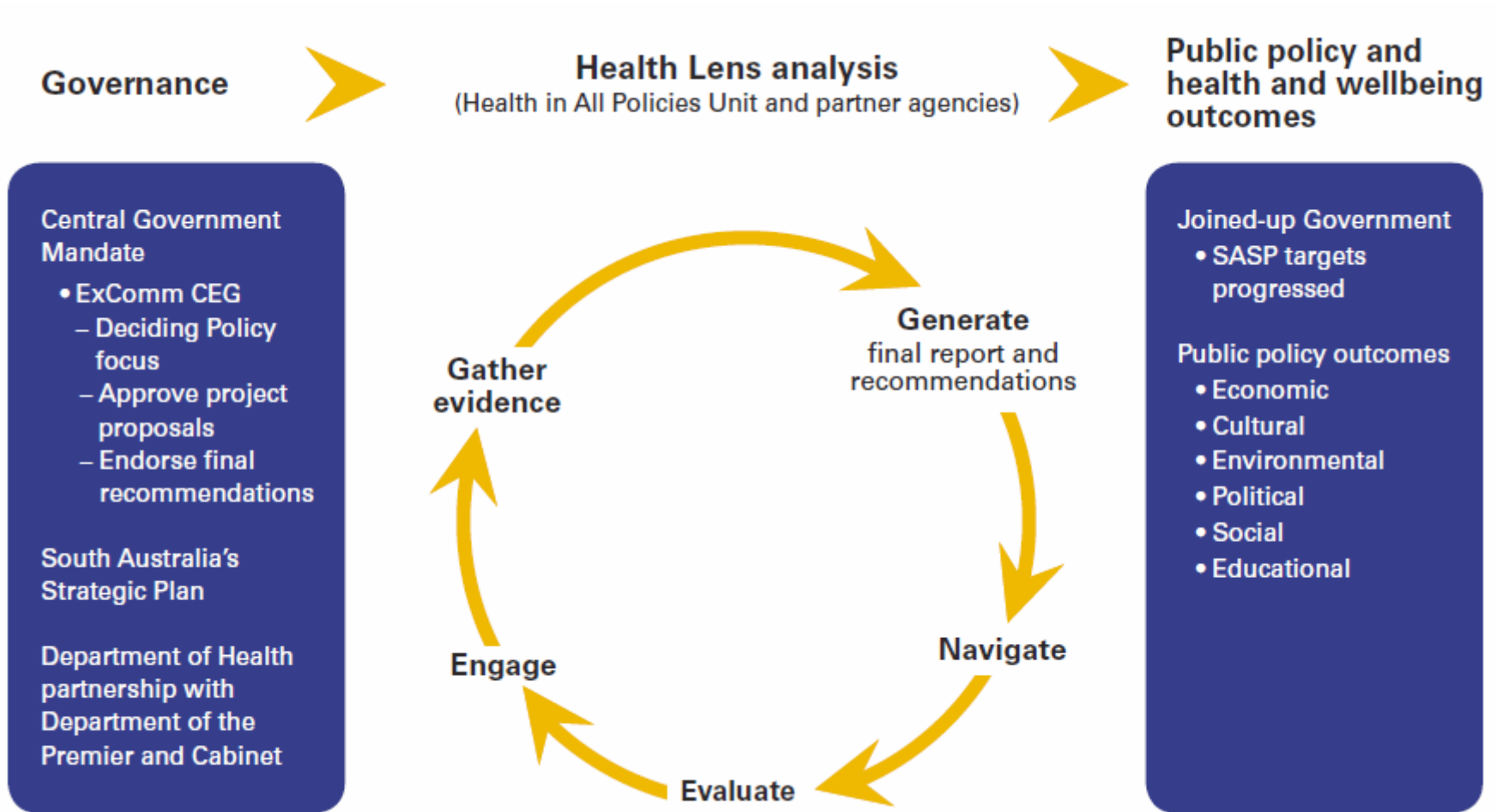


Governance and HiAP

- **Central leadership**
 - Centralised government agency commitment
 - Linked to centralised mandate
 - Clear policy advisory role—priority setting
 - Active participation
 - Partnership with health agency
- **Health Commitment**
 - Internal mandate
 - Policy development space
 - Link to health reform agenda
 - Resource allocation



HiAP – South Australian Model



Health Lens Analysis Projects

- Water Sustainability
- Regional Migrant Settlement
- Digital Technology
- [Transit-oriented Developments \(TODs\)](#)
- Marion City Council Re-Development–Intensive Workshop
- Improving Parental Engagement in Children’s Literacy
- Aboriginal Road Safety
- Healthy Weight (desktop analysis)
- Active Transport
- Sustainable Regional Development: Mining
- Overseas Students Health and Welfare
- Earning and Learning
- Active ageing with Country Health SA



Transit Oriented Developments

Project Aim:

To provide design guidance for TODs that integrate transport, planning and health considerations in a South Australian context, thereby maximising liveability and sustainability.

Health Lens partners

- Department of Planning and Local Government (DPLG)
- Department for Transport, Energy and Infrastructure (DTEI)
- Land Management Corporation (LMC)
- Department of Health



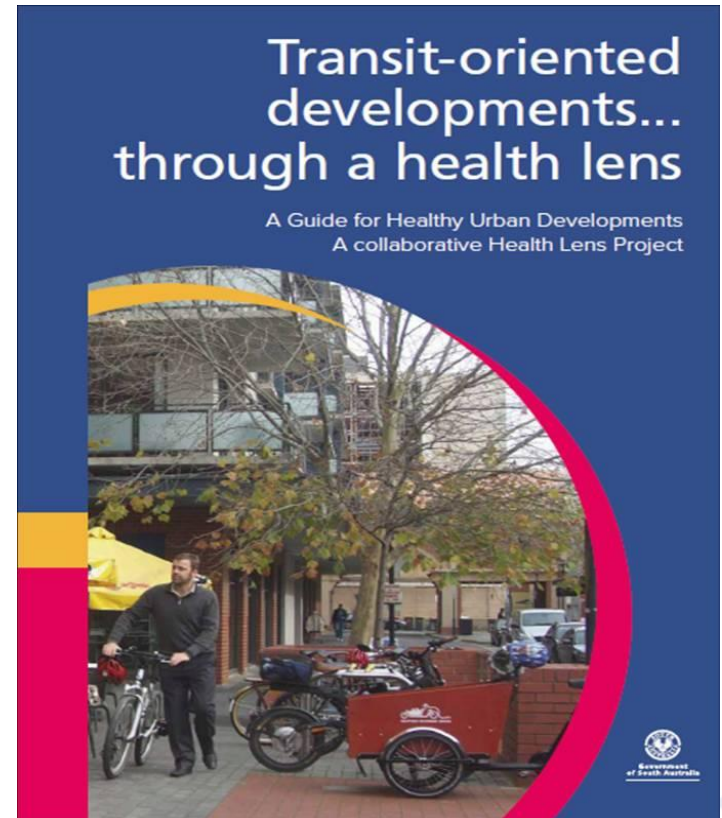
Healthy TOD Principles

- Sustainable and Vibrant Adelaide- ensuring that TODs are successful in the future
- Accessible public transport- cornerstone of all TODs
- Social inclusion- supporting an inclusive and diverse community
- Physical activity- encouraging a more active lifestyle
- Living in a healthy environment- optimising noise and air quality
- Strengthening communities- integrating TODs into the surrounding community
- Mental health and wellbeing- creating places for people
- Access to healthy food- protecting the state's food bowl
- Workplace access and amenity- local jobs for local people



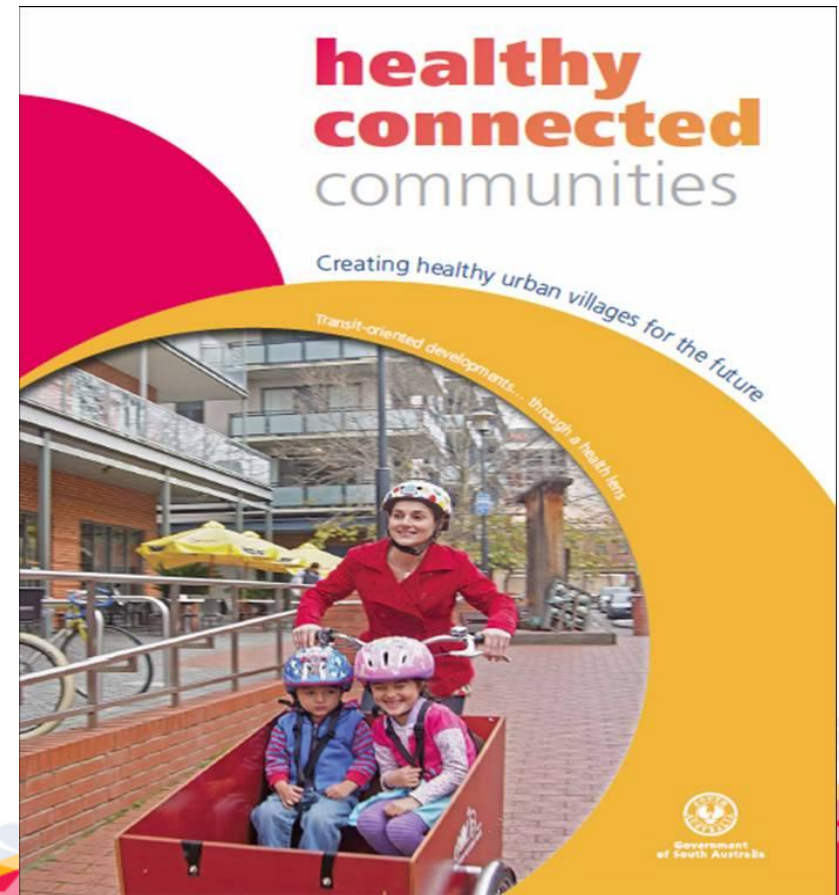
Transit Oriented Developments - outcomes

- **Partner agencies' improved awareness of SDOH and health & wellbeing impacts**
- **Health staff improved understanding of partner agency processes and underlying policy drivers and values**
- **Stronger connections between members of the partner agencies**
- **Importance of developing a shared understanding early in process and revisiting/clarifying this throughout**
- **Need to work collaboratively on all aspects of the project to maintain a 'group' focus**
- **Persistency pays off!**



Transit Oriented Developments

- **Next Steps**
- Documents launched by Deputy Premier in Sept 2011
- Principles being incorporated into work of partner agencies
- Principles applied at local level with City of Marion
- Investigating potential to develop training module
- In discussion with IDC about how to incorporate TODs principles and evidence into their documents



Acknowledgements

- Health in All Policies Unit members
 - Deb
 - Amy
 - Zoe
 - Isobel
 - Matt

- HiAP Health Lens Partner Agencies

For further information please visit our website:

<http://www.health.sa.gov.au/pehs/hiap.htm>





Government of South Australia

SA Health



Government
of South Australia